

(n)Code Applet-less PKI component Help Document

Contents

Prerequisite.....	2
Steps to install the setup.	3
Steps to uninstall / re-install	5
Import security certificate (if you are not able to use applet less PKI component)	6
Debugging Applet-less PKI component.....	12
For any support email	Error! Bookmark not defined.

(n)Code Solutions

Prerequisite

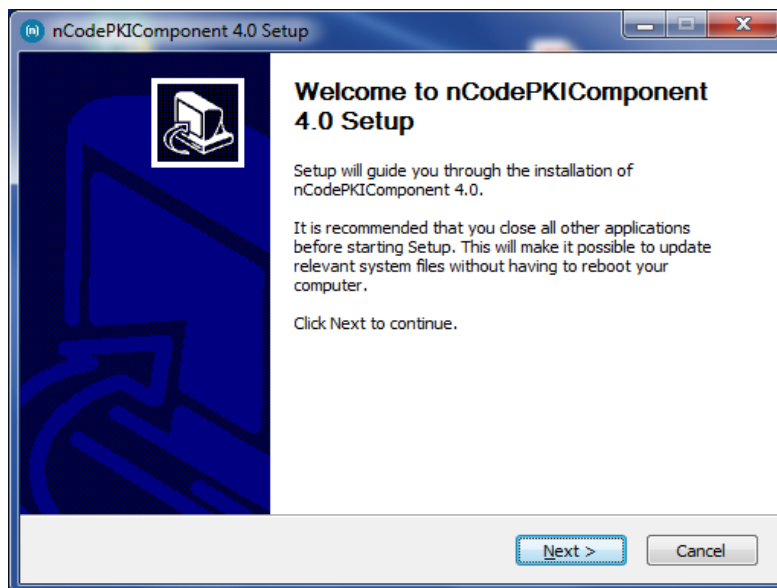
- Java 1.8 or above
- Local system admin rights
 - Note: do not run as “run as administrator”.
 - Must not ask for any username or password while installation

(n)Code Solutions

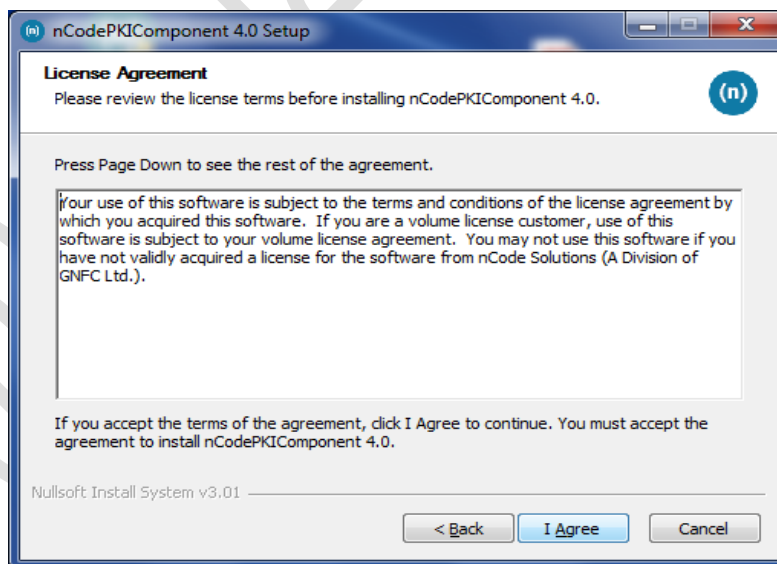
Applet-less PKI component Help document

Steps to install the setup.

- Click on nCodePKIComponent setup, popup will be shown as below.

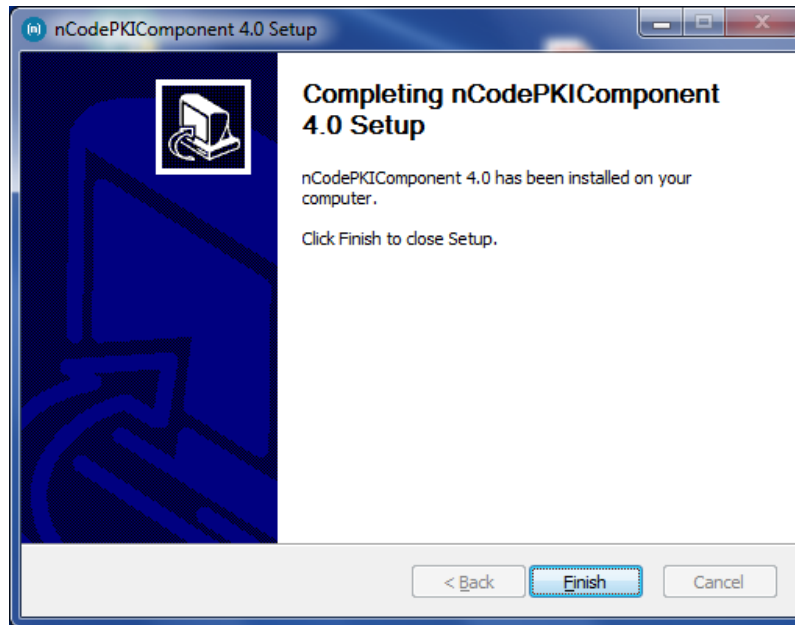


- Click on next, Agree on terms and condition.

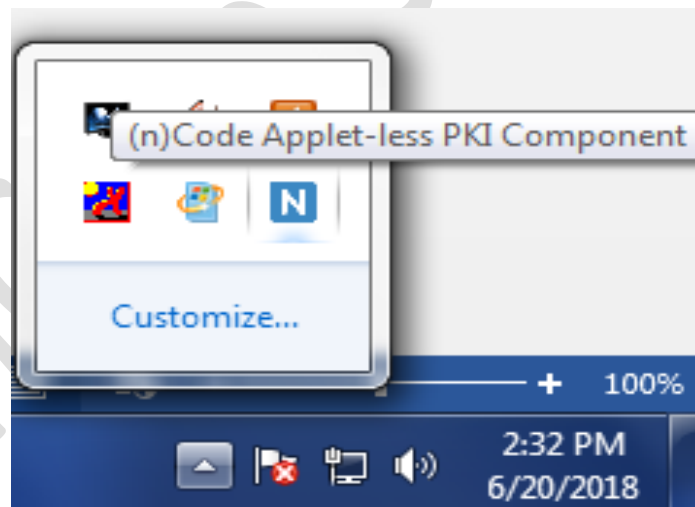


Applet-less PKI component Help document

- Click on finish.



After you click the finish button Applet-less pki component will run automatically and you will get icon in the system tray



Steps to uninstall / re-install

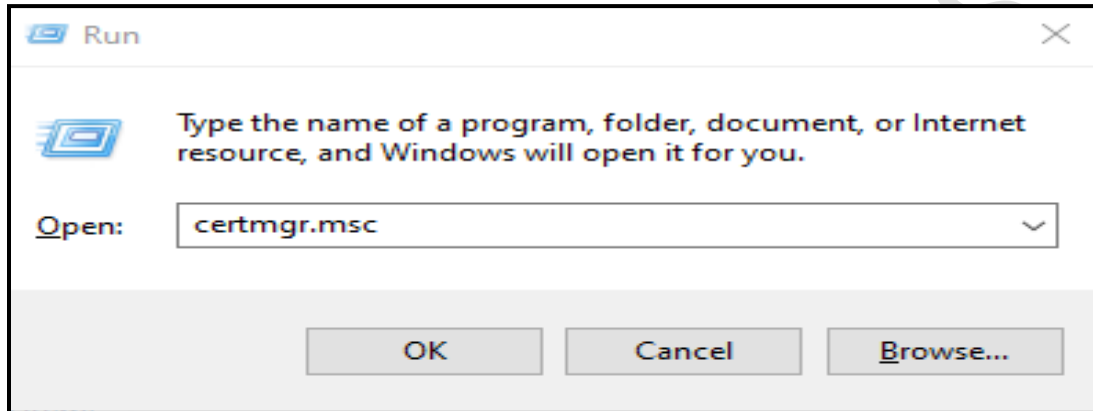
- Go to **control panel >> add / remove program >>** search for **nCodePKIComponent V4.0**
- Right-click on **nCodePKIComponent V4.0** and
- Select **uninstall / change** which will open a wizard
- Follow wizard to uninstall **nCodePKIComponent V4.0**
- Right-click on **Remove_OLD_Settings.bat** (which you have already downloaded with the installer) and **run as administrator** to remove configuration if any remain.
- Install **nCodePKIComponent V4.0** using the setup to use it once again

nCode Solutions

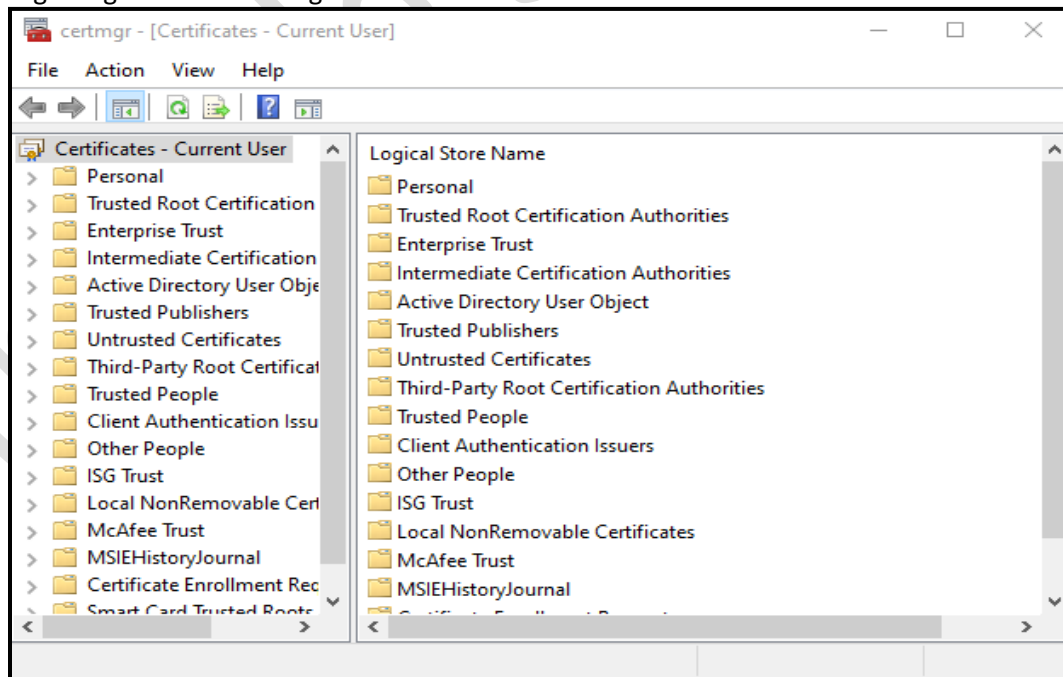
Applet-less PKI component Help document

Import security certificate (if you are not able to use applet less PKI component)

- Close all browsers open in the system.
- Save **localhost.crt** in the system which is shared with this help document.
- Click **WIN + R** (to open the run command), after the dialog box is open
 - Write **certmgr.msc** in run command and press enter or click on the OK button

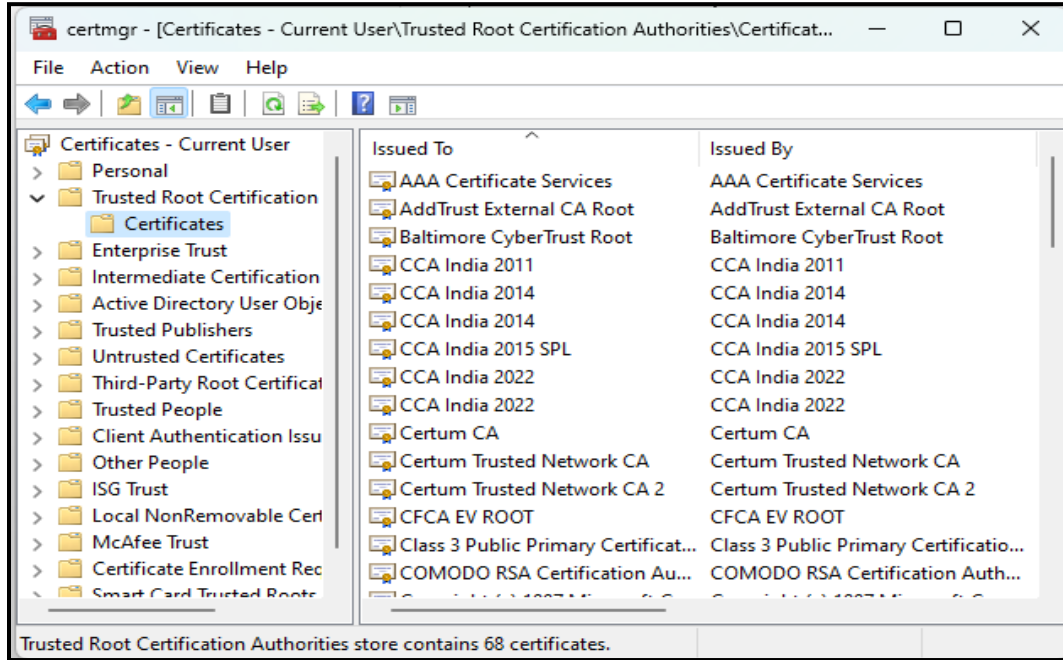


- It will open a new dialogue box as shown below
- After getting below the dialog box

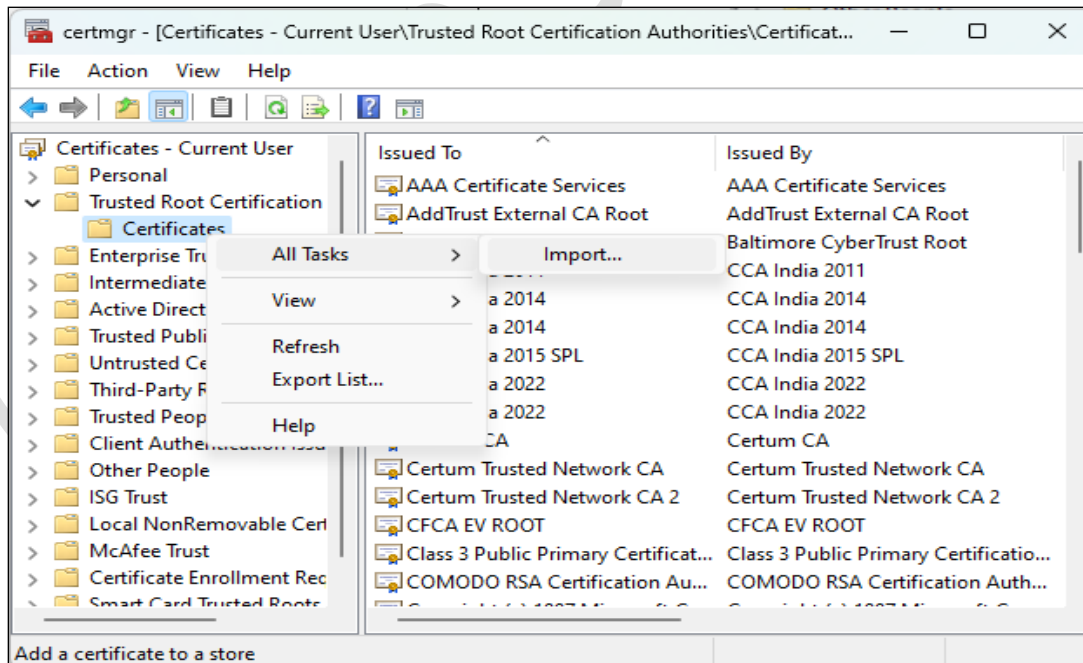


Applet-less PKI component Help document

- Go to “Trusted Root Certification” >> “Certificates”



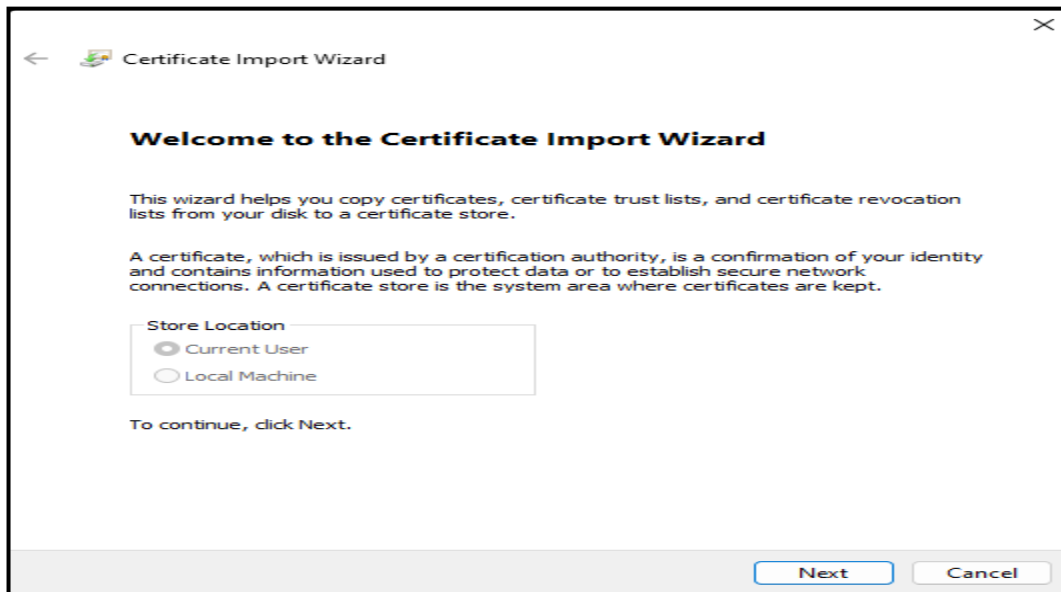
- Right Click on “Certificates” go to >> “All Tasks” > “Import...”
 - It will open the wizard as shown in 7



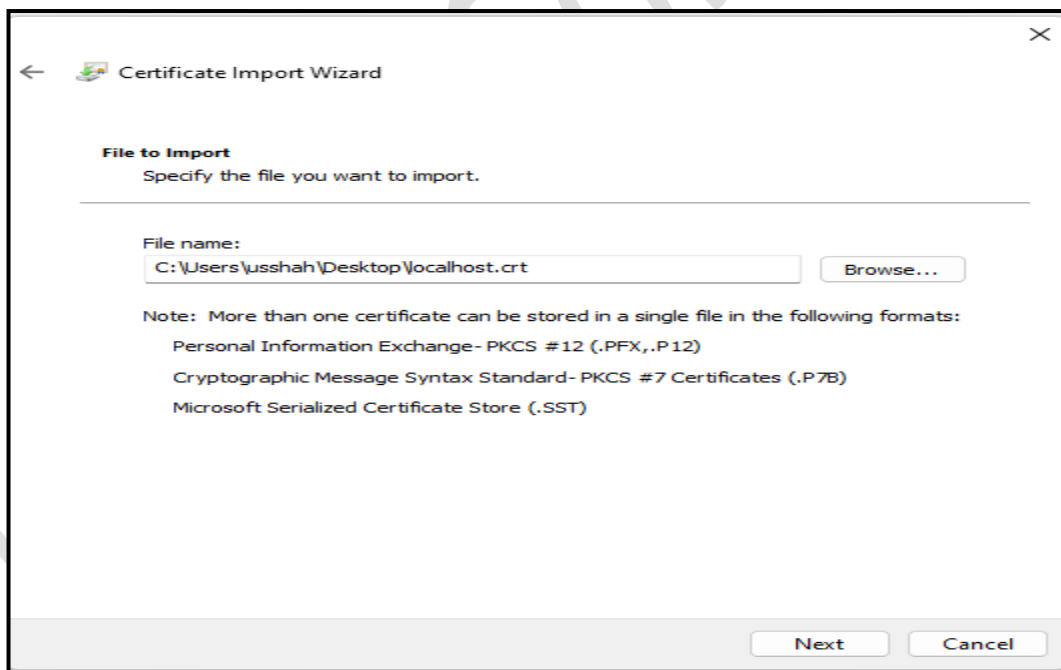
- Follow Certificate import wizard to import “localhost.crt” file in your “Trusted Root Certification

Applet-less PKI component Help document

authority”

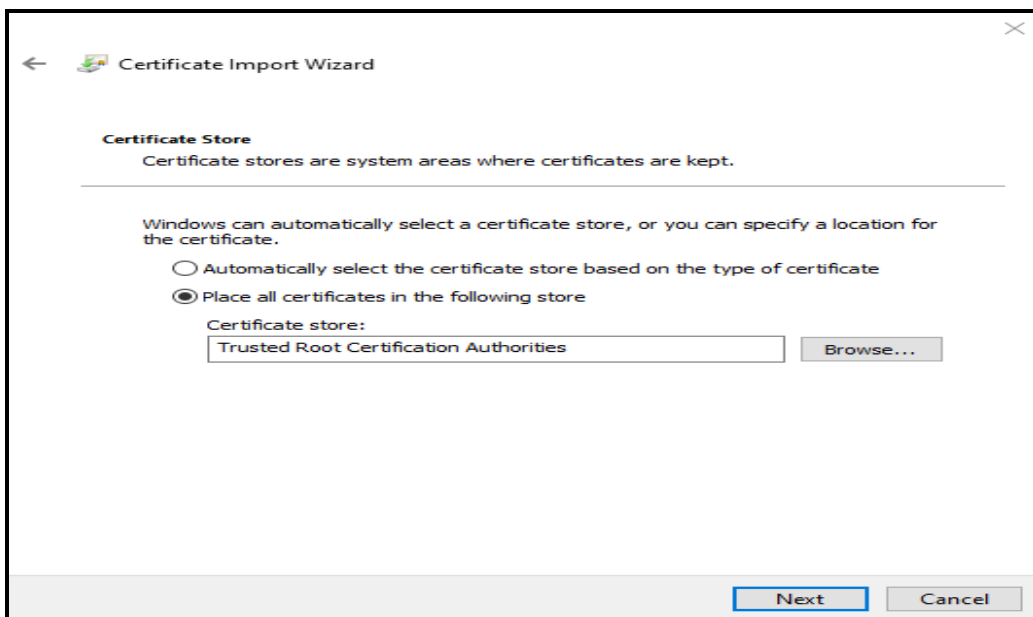


- Click Next to continue

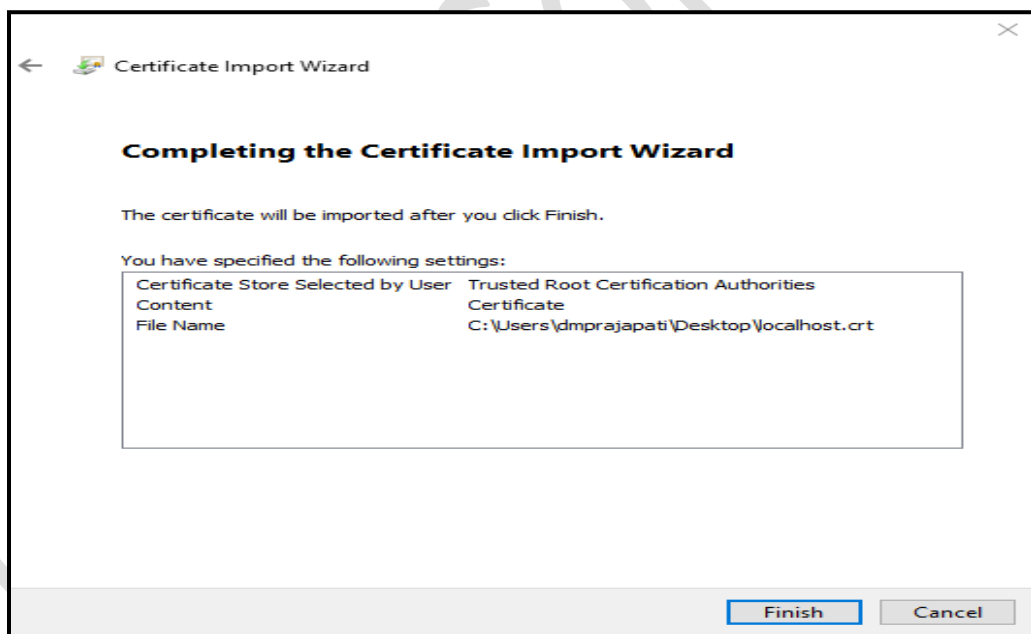


- Select "localhost.crt" file and click Next

Applet-less PKI component Help document



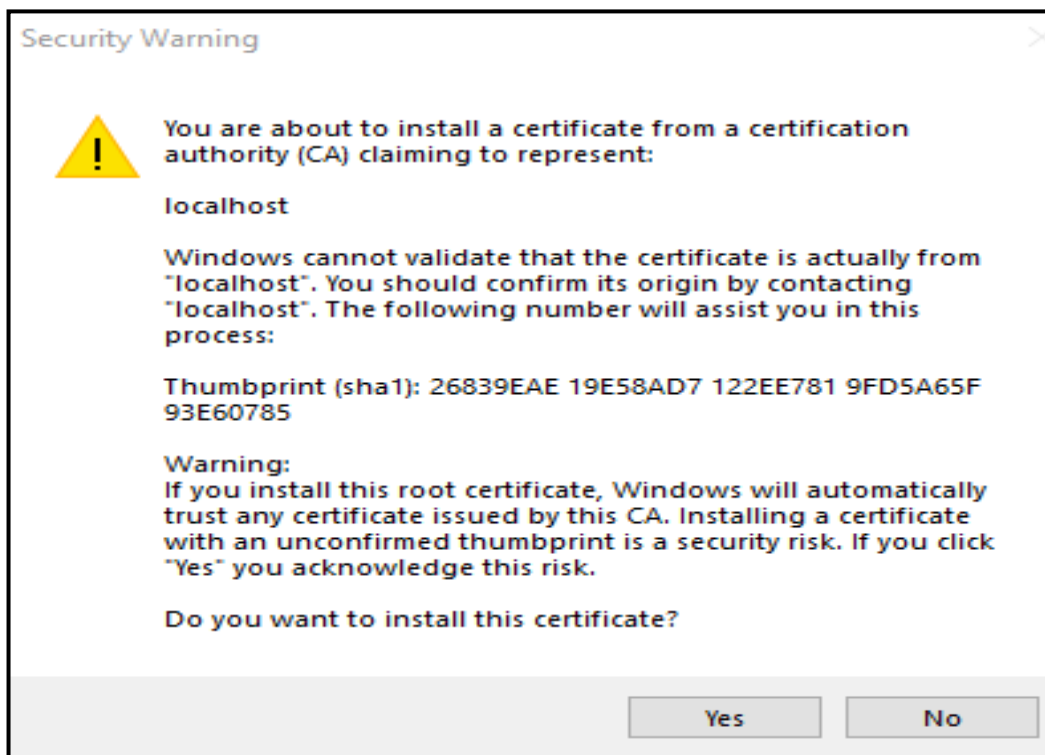
- Click Next to continue



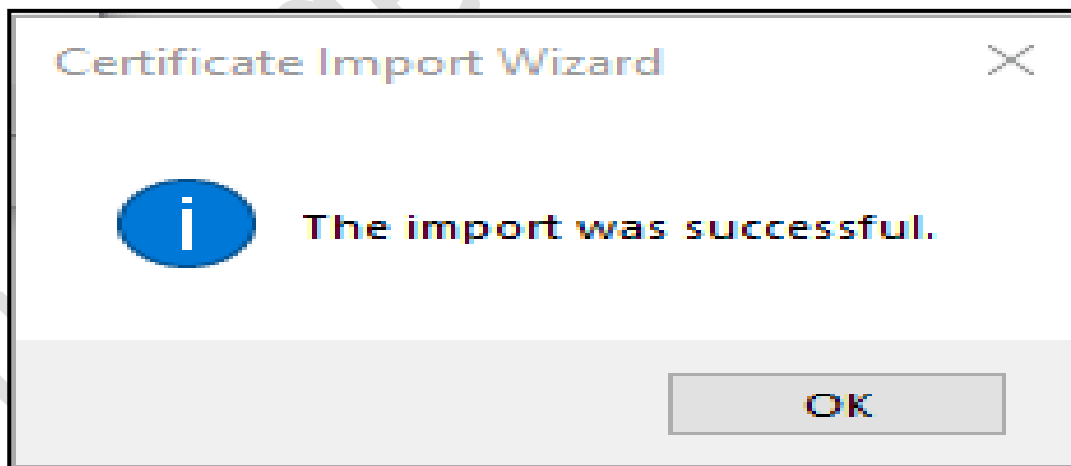
- Then click on Finish

Applet-less PKI component Help document

- You will get one more dialog box as show below
 - Click on Yes



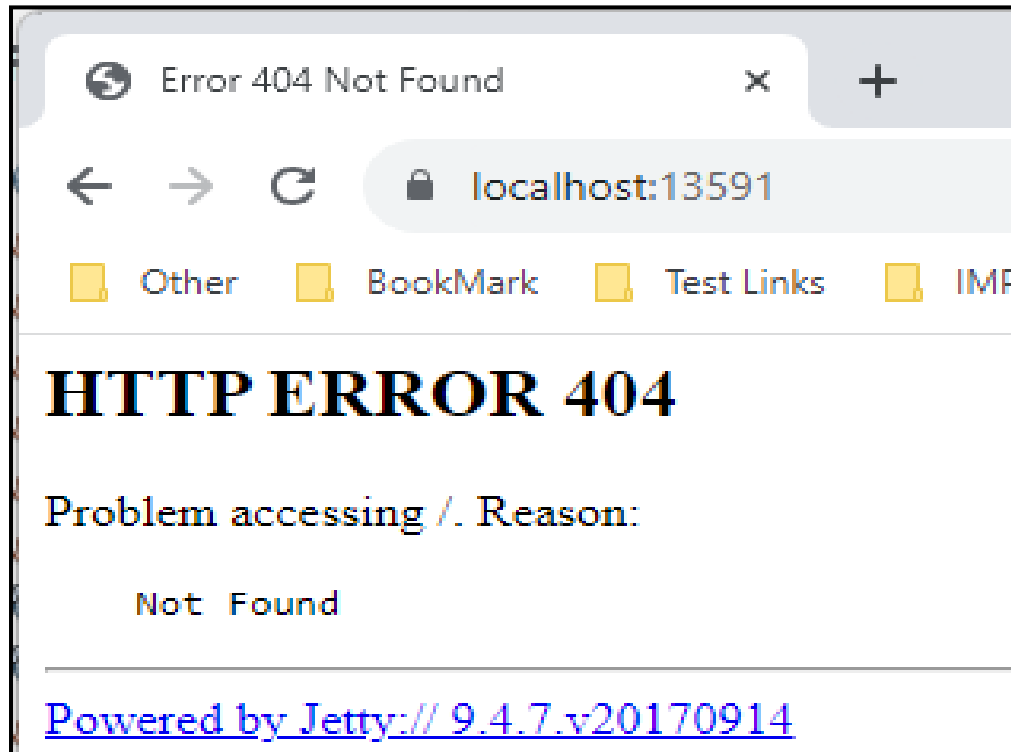
- After that you will get message "The import was successful"



- Close all open windows

Applet-less PKI component Help document

- Open Chrome web browser
 - Try to access the following URL <https://localhost:13591/>
 - **If you are getting the following message changes are applied successfully.**



Debugging Applet-less PKI component

- Go to the PKI component installation folder :
 - For 64-bit system
 - Close already running PKI component from the system tray (near system date & time)
 - C:\Program Files\nCodePKIComponent\
 - Search for **run_64.bat** file
 - Double click on **run_64.bat**
 - it will open a command prompt and PKI component in debug mode
 - For 32-bit system
 - Close already running PKI component from the system tray (near system date & time)
 - C:\Program Files\nCodePKIComponent\
 - Search for **run_32.bat** file
 - Double click on **run_32.bat**
 - it will open a command prompt and PKI component in debug mode
- You will see the PKI component logs in the command prompt
 - Copy-paste command prompt content in a text file and send it to us.
 - Note : do not share screen shot of command prompt